

Lower Don Enabling Works Package 3 FEATURE PROJECT



Project Requirements

Lower Don Enabling Works Package 3 focuses on transitioning the trains from tunnel to bridge in downtown Toronto's Lower Don Lands neighbourhood. Awarded to KO Constructors, a Kenaidan and Obayashi joint venture, this enabling works contract for the new 15.6 km Ontario Line subway requires close coordination with Metrolinx and the Ontario Line delivery team.

The work under this contract includes two major elements – a portal tunnel structure and a steel arch bridge.

Constructing a 300 m cut-and-cover tunnel box structure and a 250 m u-wall portal structure involves many major subtasks:

- Don Yard/USRC/Bala Subdivision track relocations and removals within the project area to facilitate the proposed Support of Excavation (SOE) construction and final track configuration
- Installation of a new monopole structure to facilitate the relocation of overhead, high-voltage power lines
- Relocating and protecting utilities and signal infrastructure
- Installing SOE for the cut and cover tunnel and portal structures
- Constructing a tunnel termination block
- New emergency services building with connections to the City of Toronto service infrastructure
- Noise barrier walls
- Wet-well pumping station for the tunnel stormwater drainage

For the other major scope, a 120 m clear-span steel arch bridge to carry the two Ontario Line tracks over the Don Valley Parkway (DVP) and Don River, enabling work includes:

- Constructing east and west abutments to support the bridge. Each concrete abutment is supported by two 2.4 m diameter deep foundation caissons socketed into bedrock
- Constructing an access platform and temporary trestle bridge spanning over the Don River and DVP to facilitate installation of the permanent steel bridge

Recently, the project team reached their first major milestone with the completion of the east abutment. This work consisted of drilling two large 2.4 m diameter piers 16 m through overburden and an additional 10 m deep into bedrock. Each caisson required an assembled rebar cage over 27 m long and a permanent steel liner socketed into bedrock. Over 100 m³ of concrete was needed for each caisson.

Work is now underway for the west abutment which should be completed in the fall. The west abutment is significantly more challenging with each caisson extending more than 36 m through overburden and a further 8 m into bedrock.

Key Challenges

- Very aggressive schedule with interim milestones that are aligned with adjacent Ontario Line works contracts
- Working adjacent to and over the Don Valley Parkway
- Limited site access with restricted laydown areas
- Working within a high-density, active community
- Environmentally sensitive location, including construction within the Don River

Our team mobilized and began onsite works in early 2024, construction is scheduled to be completed in late 2028.

Roles & Responsibilities

- Owner:** Metrolinx
- Consultant:** Ontario Line Technical Advisor (One Team)
- Environmental Services:** Groundwater Environmental Management Services Inc. (GEMS)
- GIMP, Noise & Vibration Monitoring:** EXP Services Inc.
- Quality Control Services:** Nasiruddin Engineering Limited (NEL)
- Communication & Public Engagement Services:** LURA Consulting
- Trestle Engineering Services:** Harbourside Engineering Consultants
- Concrete Formwork & Mechanical:** Kenaidan Contracting Ltd.
- Concrete Reinforcement:** Nucor Rebar Fabrication
- Concrete Supply:** Ontario Redimix
- Bridge Earthwork & Site Services:** Dagmar Construction Inc.
- Permanent Bridge:** Cherubini Metal Works Limited
- Bridge Erector:** E.S. Fox Limited
- Electrical:** Net Electric Limited
- Rail Corridor Utilities:** Robert B. Somerville
- Shoring, Caissons, Excavation, Jet Grouting and Trestle (Shoring & Falsework):** Green Infrastructure Partners Inc. (GIP) GFL Environmental Inc.
- HONI Monopole Installation & Relocation:** Powertel Utilities Contractors Limited

Inside This Issue



POINT OF INTEREST
Annual Partnering Event



FEATURE PROJECT
GTAA - Terminal 1
Washroom Revitalization



OUR MESSAGE
Jim Lynch Retires



GTAA - Terminal 1 Washroom Revitalization FEATURE PROJECT

Project Requirements

At Toronto Pearson Airport, Terminal 1 is the largest terminal serving domestic, transborder, and international flights. It accommodates over 30 million passengers annually. This revitalization project is focused on upgraded washroom facilities. It aims to enhance the passenger experience by providing real-time awareness of foot traffic within the washroom and customer experience feedback through a third-party device located at the entrance/exit of each washroom.

This contract involves renovations to 41 washroom banks. Major work components include demolition, mechanical and electrical upgrades, replacement of all interior finishes and washroom fixtures, and accessibility upgrades. New finishes will consist of quartz wall panels and vanities, custom full-height glass image panels, gypsum board ceilings, and thin-set terrazzo flooring. All lighting in the washrooms will also be replaced.

Our ongoing priority is to work closely with the GTAA to limit operational disruptions while maintaining safety, security, and connectivity for travelers. Construction began in late 2023 and will be completed in 2026.

Key Challenges

- Safe movement of materials and equipment through public corridors
- Work is spread across the terminal in a busy airport environment
- Dealing with multiple stakeholders for the duration of the project
- Coordination and installation of custom lavatories, mirror cabinets, and full-height glass image panels
- Night shift work to accommodate noise levels during demolition



Roles & Responsibilities

Owner: Greater Toronto Airports Authority (GTAA)

Consultant: EXP Services Inc.

Demolition: CLC Infrastructure Inc.

Mechanical: DTL Mechanical Inc.

Electrical: C.M.S. Electrical Group Ltd.

Miscellaneous Metals:
ATH Custom Metal Fabrication

Fire Suppression Sprinkler: Vipond Inc.

Glazing & Glass Panels: Explore1.Ca Ltd.

Door & Hardware Supply & Installation:
Egress Systems of Canada Ltd.

Drywall: Oakdale Drywall & Acoustics Ltd.

Epoxy Terrazzo Flooring & Quartz:
Terrazzo, Mosaic & Tile Company Limited

Interior Painting: Paintology Inc.

Washroom Accessories:
Interco Division 10 Inc.

Signage Supply & Installation:
Everest Signs



Jim Lynch Retires

OUR MESSAGE



After 16 years with Kenaidan, Jim Lynch retired this past summer. He was an integral part of Team Kenaidan and he will be remembered for his hard work and dedication.

Jim joined Kenaidan in 2008 as part of the Mechanical Team working in the field and eventually became a Fabrication Technician in the shop. During his time at Kenaidan, he worked on several large projects within the heavy civil, infrastructure, and energy sectors. Jim's career

included noteworthy projects such as Lorne Park Water Treatment Plant, Lakeview Water Treatment Plant, and Duffin Creek Water Pollution Control Plant. Some of his most recent work in the shop included miscellaneous fabrications for job sites and repair of equipment as the Welding Operations Coordinator.

"I had the pleasure of working with Jimmy for over 18 years, which started before we joined Kenaidan together in 2008," said Larry Dorman. "During this time, we have spent countless hours together on many projects over the years. Someone like Jimmy is irreplaceable with his vast knowledge and strong work ethic. He was always the voice

of reason for me, and the voice for his fellow peers. What I will miss the most is his daily jokes and sense of humour as I'm sure I wouldn't be alone in saying that. Jimmy, you will always be part of Team Kenaidan and we hope you find the time to visit, and more importantly, enjoy this next chapter with your family and friends."

We thank Jim for his commitment and dedication to Kenaidan and extend our heartfelt wishes for a fulfilling retirement ahead. We know he won't be a stranger and look forward to having him back for the occasional job now and then.

Recently Awarded

| GTAA - Vendor of Record for General Contractor Services

Bramalea GO Achieves LEED® Gold

ENVIRONMENTAL UPDATE



Gold certification. A minimum of 62 points is required to achieve LEED® Gold, and the certification process began in the planning and design phase and continued through construction and commissioning.

Highlights of the implemented sustainable functions on the project included a central focus on water efficiency, specifically indoor water use reduction. The strategy to reduce indoor water usage by 35% was achieved by selecting low-flow fixtures. In addition, drought-tolerant plant species for low maintenance requirements with water use were selected. For renewable energy production, a 250KW solar panel array was installed on the roof of the parking structure that can generate enough energy to run the entire station off solar power. The parkade also includes multiple electric vehicle charging stations. All tunnels, platforms, station areas, and parking lots also feature energy-efficient LED lighting. For green power and carbon offsets, a commitment was made for 5 years based on 100% of the project's energy requirements.

Indoor Environmental and Air Quality (IAQ) is an essential component of LEED® and Bramalea GO met the enhanced IAQ strategies by providing entryway systems (entrance grilles for cross-contamination prevention), MERV 13 filtration on the air handling units, and a complete building

flush-out strategy completed at the station building. Using low-emitting materials, the project complied with emissions and content standards for adhesives, sealants, paints, coatings, flooring, composite wood, insulation, and furniture. The project received an "Exceptional Achievement" in documentation and use of 100% of the products listed. Materials were carefully selected from manufacturers that had Health Product Declarations, Cradle to Cradle certification, Declare labels, and Business and Institutional Furniture Manufacturers Association (BIFMA) certified furniture.

Throughout the project, weekly erosion and sediment control inspections were conducted as part of the LEED® documentation submission to ensure the site was being maintained. The project team also exceeded the LEED® waste diversion rate of 75% by achieving a waste diversion rate of 95%, one of the highest since we started tracking waste diversion on our projects many years ago.

Achieving LEED® Gold certification on the Bramalea GO project demonstrates our commitment to contributing to sustainability and environmental responsibility. This achievement also reflects our design build team's dedication and collaboration to integrate advanced sustainable practices into our projects.



Earlier this year, our Bramalea GO Station and Parking Structure project achieved LEED® (Leadership in Energy and Environmental Design)

Annual Partnering Event

POINT OF INTEREST



On June 20th, we hosted our 30th annual Partnering Event at our Derrycrest office. This event aims to bring together industry professionals and foster connections between our clients, trade partners, suppliers, and employees. 2024 also marks our 50th year in business, making this event especially memorable. Attendees enjoyed an afternoon filled with refreshments, food, and incredible entertainers.

This event is not only to meet and mingle but to strengthen our connections and emphasize our spirit of collaboration. Each year the success of this event continues to grow as we bring together old and new faces to forge connections, promote collaboration within the construction industry, and reconnect. The importance of coming together and maintaining positive working relationships is something Kenaidan strongly believes in.

A big thank you to all the Kenaidan volunteers, new attendees, and those who have attended throughout the years.

Community Corner

On Canada Day, Team Kenaidan participated in the Optimist Club of Collingwood and Southern Georgian Bay's 19th annual Rubber Ducky Race.

Hundreds of rubber ducks were released into the river to compete.

All proceeds supported local youth programs and initiatives.



Greening our workspace! Team Kenaidan came together for a tree-planting event to make our office and our planet a little greener.

Chris and Tharsi lend a hand in bringing life to our workspace, one tree at a time!



Recently Completed



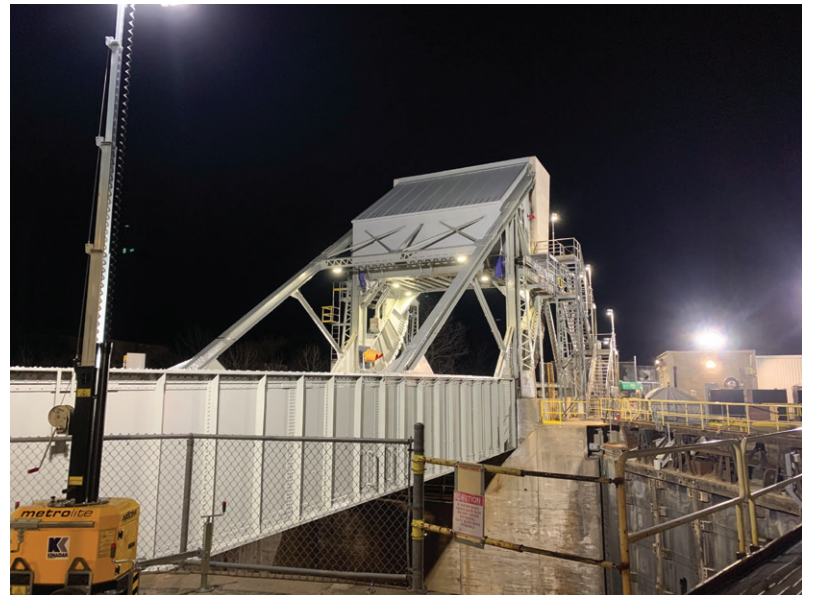
Eglinton GO – Accessibility Upgrades

On July 19, 2024, this project led by Kenaidan, reached a significant milestone: substantial completion. The project involved modifications and upgrades to the existing station to enhance accessibility. Our work included installing accessible mini-platforms, ramps, and elevators, as well as improving the tactile walking surface indicators and widening the platforms. Additionally, a public plaza on the east side of the facility now connects the station entrance to the platforms.



GTAA Terminal 3 Hammerhead B Satellite Primary Inspection Line (SPIL)

The Hammerhead B SPIL project was located entirely on the secure airside of Terminal 3. Kenaidan built a multilevel structure that links arriving passengers at the Arrivals Transfer Level, CATSA (Canadian Air Transport Security Authority) screening, and Departure Level for connections.



Bridge 6 Major Rehabilitation

In St. Catharines, Ontario, the Bridge 6 project involved major rehabilitation of the existing moveable bridge, including fixed span jacking. The project also included critical mechanical installations in the machinery house, counterweight resurfacing, track, and tread plate replacement, sandblasting and recoating of all bridge components, and electrical upgrades, all located in the Welland Canal.

Recently Completed



Exhibition GO Station - Early Works

Kenaidan completed the preliminary works package at the Exhibition GO Station which will facilitate work on the future Ontario Line. We installed a temporary pedestrian bridge, modernized the south platform elevator, reworked the south platform, realigned Tracks 1 and 2, and installed a new joint platform on the north side. Additionally, construction included a tunnel extension to enhance pedestrian access between the north and south platforms.



Baycrest Apotex HVAC Replacement

In April 2024, Kenaidan achieved substantial completion for the upgrade to the HVAC system at the Apotex Centre to improve air quality and circulation while eliminating the risk of imminent failure of the system.



Millwright

Kenaidan's millwright services recently completed replacing the flywheel bearings on a 1,200-ton automotive stamping press.



Lower Don Enabling Works Package 3

The team marked a significant milestone by successfully completing the east abutment for the Lower Don Bridge. Work is now progressing on the west abutment.

Projects Underway



Bloor GO Station (TTC Connection)

We are building a 270-meter underground pedestrian tunnel extension to link Bloor GO/UP Station with Dundas West TTC Station. Once completed, customers will have a convenient and secure pedestrian connection between GO Transit, UP Express, and TTC services.



Duffin Creek WPCP Stage 3 Liquids and Miscellaneous Remedial Works

After 15 years of operation, the Duffin Creek Stage 3 Liquid facilities now requires remedial works and asset refurbishment. Kenaidan's scope of work includes installing equipment and conducting process, mechanical, electrical, structural, and SCADA work to facilitate the asset refurbishment.



Royal Avenue Pump Station Rehabilitation

The Royal Avenue Pump Station is situated in New Westminster, BC. We will replace three pumps and the forcemain that connects the pump station discharge header to the RACC. Additionally, an expansion will be built for the Odour Control Building.



Maple GO Infrastructure Improvements

The Maple GO Station will feature a new elevator and stairs, additional parking, an expanded bus loop, and upgrades to the Passenger and Pickup drop-off (PPUDO) area. A new second track and platform will accommodate two-way, all-day service, with an overhead pedestrian bridge improving connectivity. Tunnels have been installed to connect passengers to the new track and platform.

Terminal 3 Parking Garage Structural & Mechanical Work and Wayfinding Improvements

Kenaidan is performing repairs to Pearson International Airport's Terminal 3 parking structure. These include concrete cracks, masonry wall repairs, and a new PVC canopy cover. Mechanical repairs include the installation of new sump pit covers and the replacement of damaged grates.



Projects Underway



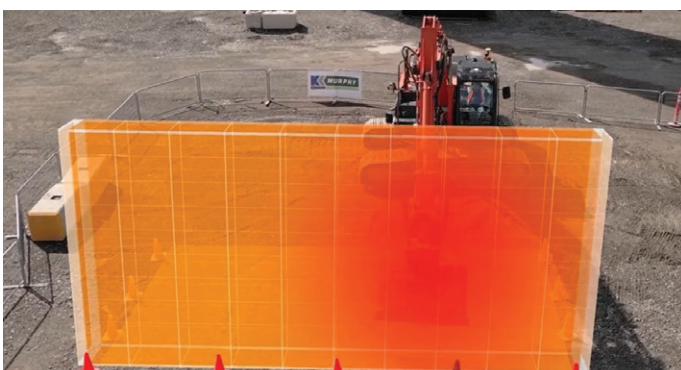
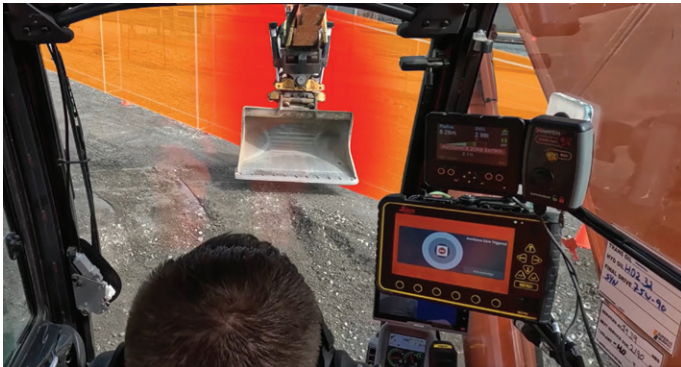
TTC - Islington Station Redevelopment

Redevelopment of the Islington Station includes the construction of a new street-level bus terminal which will be a multi-bay bus platform configuration with common staircases, escalators and elevators for access to the existing concourse level of the station.



Demonstrating safety in action!

Kenaidan Murphy Joint Venture (KMJV) is committed to bringing global innovation to transit infrastructure projects across Ontario. As part of this commitment, we showcased our 3D Dynamic Avoidance System for tracked excavators at Kenaidan's Exhibition GO project. KMJV promoted this safety innovation and technology, which creates a digital wall to provide added assurance when working adjacent to the live rail track.



Our Company, Our People

ROAMING PHOTOGRAPHER



On June 13, Team Kenaidan participated in a team-building event where we worked together to construct a life-sized chain reaction by assembling a series of simple machines that linked to create two impressive chain reactions.



When teams come together, amazing things happen! Chains of success at our corporate event.



On June 20, Team Kenaidan hosted our annual Partnering Event, networking with clients, consultants, subcontractors, and suppliers.



This year, our Partnering Event raffle raised \$930 with all proceeds benefiting the Heart & Stroke Foundation.



Building strong teams one chain reaction at a time!



Building a winning team starts with strong communication and trust.



Aidan, dedicated employees, clients, consultants, subcontractors, and suppliers all come together to celebrate shared success and collaboration.



Teamwork makes the dream work! Partners in crime at our 2024 Partnering Event.



We hosted a lunch for our co-op students to show appreciation for their hard work. It was a great time to connect, share experiences, and enjoy good food while celebrating their contributions.

From left to right: Manjot Badwal, David Drozdowski, Jacob Mathers, Temiya Madugalle, Brandon Angumba, Lauren Macchiusi, Max Montemarano



Partners in crime at our 2024 Partnering Event.

Kenaidan Welcomes

Hassan Taimoor, Project Engineer
 Arystan Amantayev, Project Engineer
 Andrew Langton, Project Engineer
 Itunu Tomori, Project Engineer
 John Graham, Health and Safety Advisor
 Kyle Bennett, Mechanical and Electrical Coordinator
 Autumn Yaworski, Health and Safety Coordinator
 Paulina Fedko, Corporate Environmental Advisor
 Olivia Kielb, Project Engineer
 Anna Lakhman, Graphic Design & Marketing Coordinator

Welcome Back

Ming Dai, Commissioning Manager

Congratulations To

Kassam Buchh on his promotion to Site Supervisor
 Marisa Nardini on her promotion to Sr. Marketing and Proposal Coordinator
 Amir Salama on his promotion to Construction Engineer
 Christopher Stewart on his promotion to Operations Manager
 Lee Evans on his promotion to Sr. Project Superintendent

Charitable Matching Program

Kenaidan has recently matched employee donations to the following charities:

- Princess Margaret Cancer Foundation

Corporate Sponsorships

Kenaidan recently sponsored:

- Guelph Minor Lacrosse Association

Corporate Donations

Kenaidan recently made donations in support of:

- Kids Upfront Foundation
- Heart & Stroke Foundation
- Make A Wish Foundation
- Sunnybrook Foundation
- Crohn's and Colitis Canada

Upcoming Events

50th Anniversary Party in BC
 Annual Kenaidan Golf Tournament
 50th Anniversary Party in ON

Contributing Editors: Scott Brazeau, Jeff Mottashed, Steven Radencich, Anthony Cipolla, Larry Dorman, Marisa Nardini, Julie Dorie



Kenaidan's Mission Statement:

- To provide responsible, quality construction services utilizing superior innovation and expertise.
- To develop and maintain long-term relationships with satisfied clients and suppliers.
- To create a safe, challenging and enjoyable work environment where employees share in corporate growth and success.
- To build on a sound financial base where future development is promoted over short-term gain.



Kenaidan Contracting Ltd.

7080 Derrycree Drive,
 Mississauga, Ontario, Canada L5W 0G5
 Telephone 905.670.2660

Kenaidan is a registered trademark of Kenaidan Contracting Ltd.

Kenaidan Contracting Ltd.

4311 Viking Way, Unit 240,
 Richmond, British Columbia, Canada V6V 2K9
 Telephone 604.270.7670